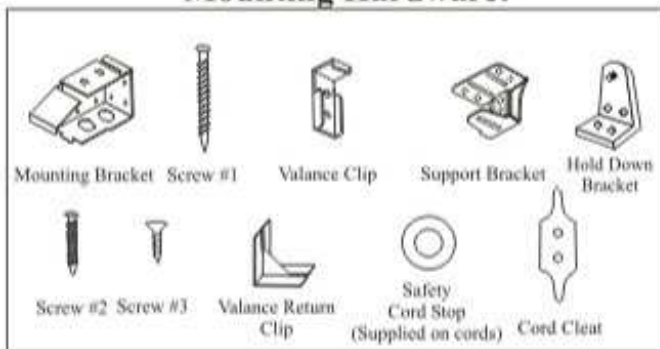


# 50MM ECO VENETIAN BLIND Installation Instructions

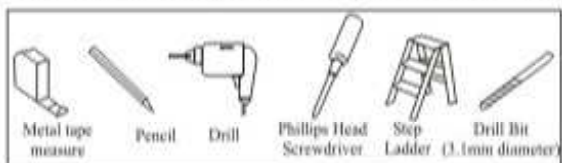
**Congratulations** on purchasing one of the best blinds on the market. You can take pride that your purchase will enhance the function and beauty of your home.

## Mounting Hardware:



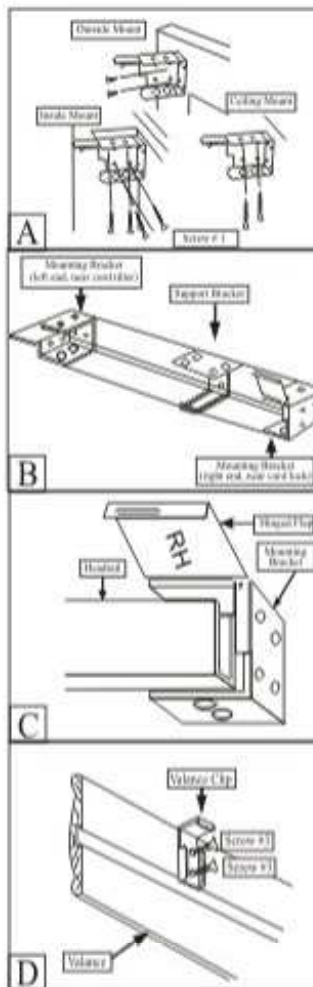
(Note : Support Bracket is supplied for blind width 100 cm or over)

## Tools Recommended for Installation:



1

## MOUNTING INSTRUCTIONS



Select the method of mounting blind that best suits your purpose.  
1) Inside window frame  
2) On the outside of frame  
3) On overhead surface ie ceiling.  
Brackets should be placed at the end of the width of the blind's headrail 6mm past each end.

### SUPPORT BRACKET

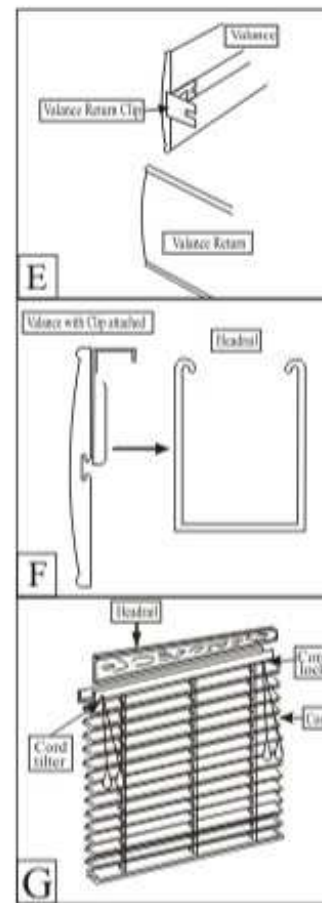
If your blind is supplied with a support bracket, position it closer to the cord lock end of the blind. Make sure the support bracket is in line with the end mounting brackets.

### INSERTING HEADRAIL

Insert headrail into brackets and lock hinged flaps down to hold headrail in position.

Screw valance clips onto back side of the valance with screws provided (Screw # 3).

2



**For Outside Mount :** Insert the valance return clip into the groove at each end of valance and valance return.

Hook valance clip with valance attached onto the top of the headrail.

Always tilt blind horizontally before raising / lowering to extend the life of the blind. **To lower blind :** move cord to left, pulling down gently until cord lock releases. **To raise blind :** pull cord downward until blind reaches desired height. **To lock cord :** pull cord right and release. Cord will lock automatically.

3